

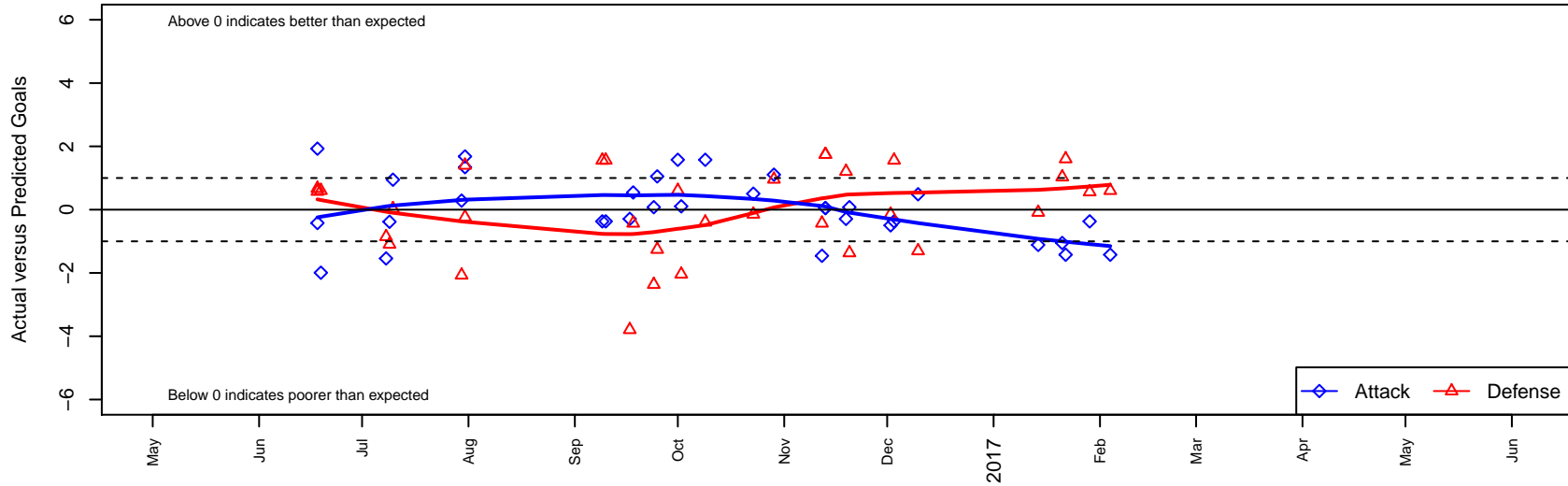
GS Surf A B01

GS Surf
 Bothel, WA
 B01 total strength=1643
 attack=17.49 defense=19.78
 fall league = RCL B01 Div 1

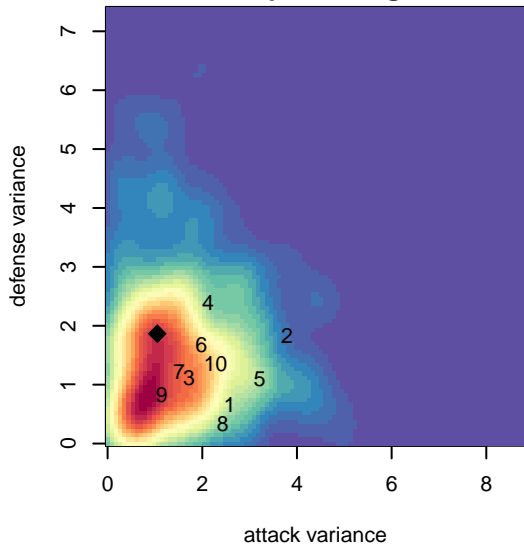
alt names used:
 GS Surf B01 A
 GREATER SEATTLE SURF SC GS SURF B01
 GS Surf B01 A
 GREATER SEATTLE SURF SC B01A (WA)
 GS Surf B01 A

Venues played:
 2016 Snohomish United Invit Gold
 2016 Nike Crossfire Challenge Super Group U'
 2016 Surf Cup Super White U16
 2016 FWRL B01
 2016 RCL B01 Div 1
 2016 WYS Championship B01

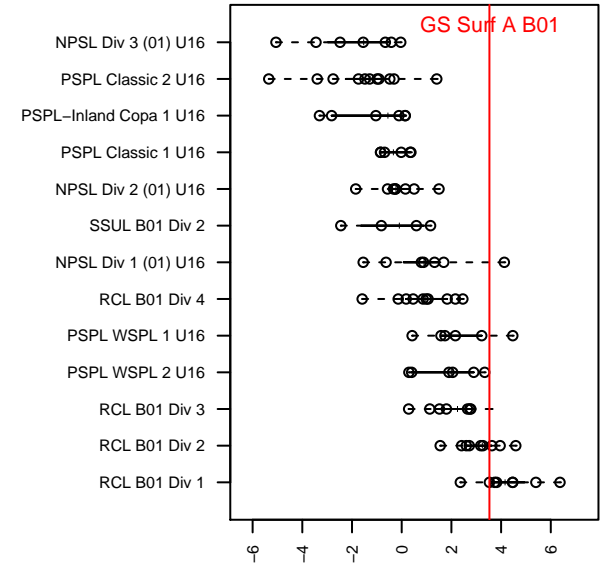
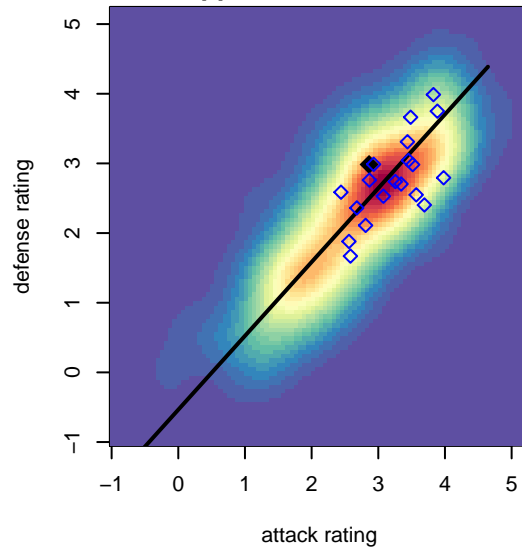
GS Surf A B01
 Dots are actual minus expected GF (blue circles) and GA (red triangles).
 Blue line is smoothed change in attack strength. Red is smoothed change in defense strength.



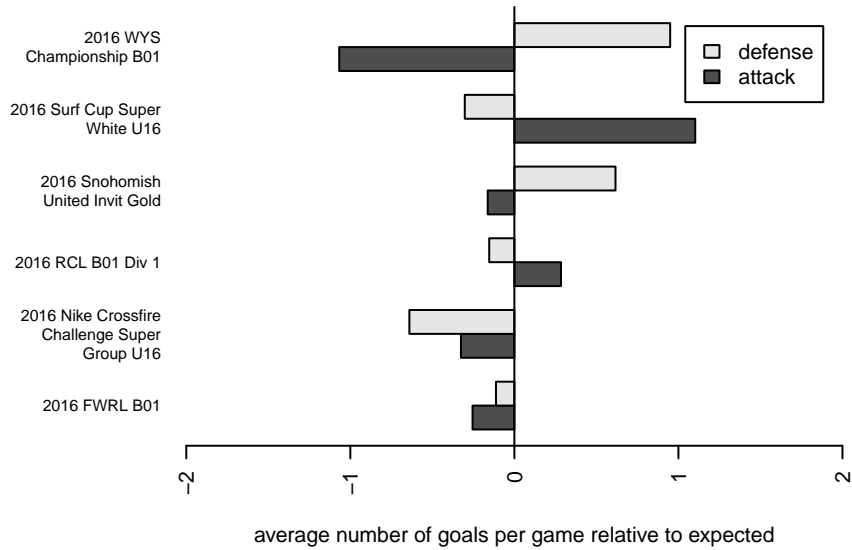
**attack and defense variance (black dot)
relative to other teams
and top 10 in region**



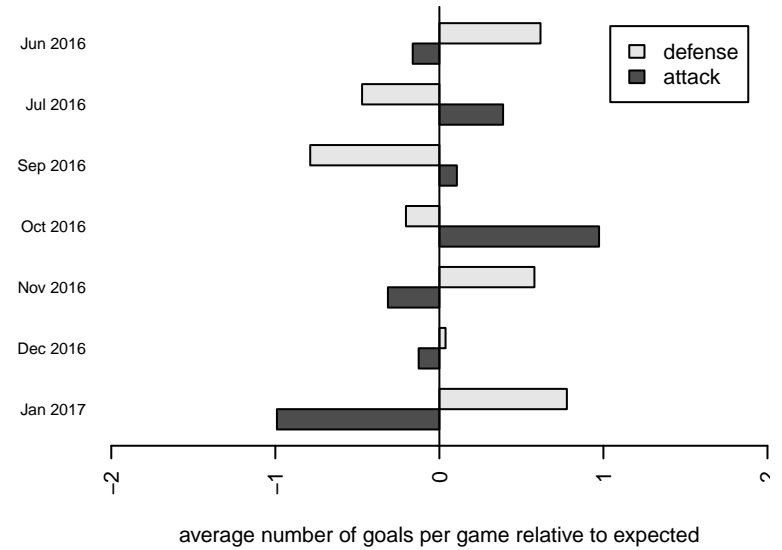
**attack and defense rating
relative to others at age
and all opponents in last 13 months**



Performance relative to 13 month average



Performance relative to 13 month average



date	home		away		venue	pred.home	pred.away
2017-02-04	GS Surf A B01	0	Spokane Sounders A B01	1	2016 WYS Championship B01	1.42	1.60
2017-01-29	Seattle United Copa B01	2	GS Surf A B01	0	2016 WYS Championship B01	2.56	0.37
2017-01-22	GS Surf A B01	0	Spokane Sounders A B01	0	2016 WYS Championship B01	1.42	1.60
2017-01-21	GS Surf A B01	0	Washington Timbers Red B01	0	2016 WYS Championship B01	1.05	1.03
2017-01-14	GS Surf A B01	0	FC West Inter B01	1	2016 FWRL B01	1.11	0.91
2016-12-10	GS Surf A B01	2	Eastside Timbers Red B01	3	2016 FWRL B01	1.51	1.70
2016-12-03	GS Surf A B01	0	Seattle United Copa B01	1	2016 RCL B01 Div 1	0.37	2.56
2016-12-02	GS Surf A B01	0	Crossfire Premier A B01	2	2016 RCL B01 Div 1	0.50	1.85
2016-11-20	GS Surf A B01	1	Eastside FC Red B01	3	2016 RCL B01 Div 1	0.92	1.63
2016-11-19	Seattle Sounders B02	2	GS Surf A B01	1	2016 FWRL B01	3.21	1.29
2016-11-13	GS Surf A B01	1	WPFC Black B01	0	2016 FWRL B01	0.95	1.74
2016-11-13	GS Surf A B01	1	WPFC Black B01	0	2016 RCL B01 Div 1	0.95	1.74
2016-11-12	PacNW Maroon B01	2	GS Surf A B01	0	2016 RCL B01 Div 1	1.57	1.46
2016-10-29	Crossfire Yakima A B01	0	GS Surf A B01	3	2016 RCL B01 Div 1	0.96	1.89
2016-10-23	Crossfire Premier A B01	2	GS Surf A B01	1	2016 RCL B01 Div 1	1.85	0.50
2016-10-09	Spokane Sounders A B01	2	GS Surf A B01	3	2016 RCL B01 Div 1	1.60	1.42
2016-10-02	GS Surf A B01	2	Crossfire Yakima A B01	3	2016 RCL B01 Div 1	1.89	0.96
2016-10-01	GS Surf A B01	3	Spokane Sounders A B01	1	2016 RCL B01 Div 1	1.42	1.60
2016-09-25	WPFC Black B01	3	GS Surf A B01	2	2016 RCL B01 Div 1	1.74	0.95
2016-09-24	Eastside FC Red B01	4	GS Surf A B01	1	2016 RCL B01 Div 1	1.63	0.92
2016-09-18	GS Surf A B01	2	PacNW Maroon B01	2	2016 RCL B01 Div 1	1.46	1.57
2016-09-17	GS Surf A B01	1	Seattle Sounders B02	7	2016 FWRL B01	1.29	3.21
2016-09-10	Seattle United Copa B01	1	GS Surf A B01	0	2016 RCL B01 Div 1	2.56	0.37
2016-09-09	Seattle United Copa B01	1	GS Surf A B01	0	2016 FWRL B01	2.56	0.37
2016-07-31	Sacramento United Reds B01	2	GS Surf A B01	2	2016 Surf Cup Super White U16	1.76	0.66
2016-07-31	GS Surf A B01	4	San Tan Legacy Red B01	0	2016 Surf Cup Super White U16	2.32	1.40
2016-07-30	GS Surf A B01	1	LA Galaxy San Diego Elite B01	4	2016 Surf Cup Super White U16	0.71	1.93
2016-07-10	GS Surf A B01	2	Washington Timbers Red B01	1	2016 Nike Crossfire Challenge Super Grou	1.05	1.03

date	home		away		venue	pred.home	pred.away
2016-07-09	GS Surf A B01	2	Crossfire Sunnyside B01	2	2016 Nike Crossfire Challenge Super Grou	2.38	0.91
2016-07-08	Whatcom Rangers Gold B01	2	GS Surf A B01	0	2016 Nike Crossfire Challenge Super Grou	1.14	1.54
2016-06-19	Eastside FC Blue B00	0	GS Surf A B01	1	2016 Snohomish United Invit Gold	0.60	2.99
2016-06-18	GS Surf A B01	1	Snohomish United Black B00	0	2016 Snohomish United Invit Gold	1.42	0.58
2016-06-18	GS Surf A B01	6	BIFC White B00	0	2016 Snohomish United Invit Gold	4.07	0.67